

# THANK YOU FOR YOUR NEW SOLVING PRODUCTS PURCHASE



## CONTACT SOLVING PRODUCTS LLC

Phone..... (855) 661-9124  
Email..... Help@SolvingProducts.com  
Website..... www.SolvingProducts.com



### IMPORTANT SAFETY NOTE

When using an electric product, basic precautions should always be followed. To reduce the risk of electric shock: The power plug and the accessories connected to it are not for immersion or for use in shower. Do not use an extension cord with this product. Unplug and remove power cord before cleaning. The batteries used in this product may present a fire or chemical burn hazard if mistreated. Do not disassemble, heat above 100°C (212°F) or incinerate. To reduce the risk of burns, fire, electric shock, or injury to persons: Close supervision is required when this product is used by, on, or near children, or persons with limited physical, sensory, or mental capabilities or invalids. Use this product only for its intended household use as described in this manual. Do not use attachments not recommended by Philips North America LLC. Never operate this product if it has a damaged power cord or charging plug, if it is not working properly, if it has been dropped or damaged, or dropped into water while plugged in. Keep the cord and power plug dry at all times. Do not handle with wet hands. Only use the power plug, USB plug and other accessories supplied with the product.

# UNBOXED ADVANTAGE

### WHAT IS UNBOXED?

Solving Products LLC offers brand-new products direct from manufacturer for consumers at low economical prices. Shipped in smaller, environmentally responsible packaging to reduce waste are only a few cost saving methods used to create the Unboxed Advantage.

- > Customer oriented with exceptionally low consumer pricing
- > Streamlined package reduces waste resulting in low environmental impact
- > 1-Year extended service plan provided by Solving Products LLC
- > Customer support available over the phone or visit our website

### CUSTOMER SUPPORT

Solving Products customer support team is knowledgeable and ready to help. Available weekdays and weekends 24/7 by phone.

PLEASE DO NOT CONTACT ORIGINAL MANUFACTURER DIRECTLY

Phone..... (855) 661-9124  
Email..... Help@SolvingProducts.com  
Website..... www.SolvingProducts.com



IMPORTANT: PLEASE CHARGE COMPLETELY BEFORE FIRST USE

# UNBOXED

## NEW RQ1150

## ELECTRIC WET & DRY SHAVER OPERATION GUIDE AND EXTENDED SERVICE PLAN

NEW ITEM WAS CAREFULLY PACKAGED BY SOLVING PRODUCTS, LLC, CERTIFIED RETAIL PARTNER OF PHILIPS NORELCO



### EXTENDED SERVICE PLAN

Purchases are backed by 1-year extended service plan ensuring products will be free from defects in material and workmanship for one year from date of purchase. Solving Products LLC will repair or replace product free of charge during this year. Consumable components (for example, shaver heads) are excluded in this plan. Service does not cover equipment failure attributed to accident, improper operation, misuse, abuse, or any cause other than defects in the materials or workmanship.

## OPERATION GUIDE

- Operation Overview
- System Display
- Click-on Attachments
- Supplied With
- Contact and Safety Notice
- Unboxed Advantage Explained

## OPERATION OVERVIEW

Buttons explained for new Philips Norelco RQ1150 shaver.

### CHARGING & POWER

To prolong shaver lifespan charge before first use and only when indicated. Power shaver on or off by pressing on/off button once.

1. Power shaver off by pressing on/off button once
2. Connect shaver to supplied AC charger only and any 100V-240V AC outlet
3. Plug and battery symbol blink alternatively while charging
4. Unplug shaver when plug symbol light is off and battery light blinks



## SYSTEM DISPLAY

### BATTERY CHARGE INDICATOR

- |                     |                                                    |
|---------------------|----------------------------------------------------|
| A. Charging         | Battery and plug symbol blink alternatively        |
| B. Full Charge      | Battery symbol lights up continuously              |
| C. Battery Low      | Plug symbol blinks while on and 30 sec. when off   |
| D. Remaining Charge | Indicated by number of charging lights illuminated |

### MESSAGES & FUNCTIONALITY



#### Plug Symbol

Symbol flashes to indicate shaver is plugged in and charging



#### Battery

Blinks while charging, displays battery life while in use



#### Replace Shaving Head (Replacement Part # RQ11)

Shaving unit symbol lights up and arrows flash to indicate replacement of shaving head - reset the replacement reminder by pressing the on/off button for 7 seconds



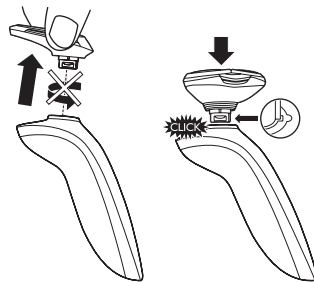
#### Travel Lock On/Off

Press the on/off button for 3 seconds to activate or deactivate lock mode which prevents accidental power when traveling

## CLICK-ON ATTACHMENTS

### USING CLICK-ON ATTACHMENTS

1. Make sure the product is switched off
2. Pull attachment straight off shaver, do not twist
3. Insert lug of new attachment into slot on top of shaver, then press down to attach (listen for click)



## AVAILABLE ACCESSORIES

NOTE: THE ACCESSORIES SUPPLIED MAY VARY FOR DIFFERENT PRODUCTS. THE PACKAGE SHOWS ACCESSORIES THAT HAVE BEEN SUPPLIED WITH YOUR PRODUCT.

RQ1150 Shaver, click-on trimmer, charging stand, case, AC charger, operation guide, plus 1 year extended service.

